

Staff Climate and Culture Survey 2021: District Results

The survey was conducted from March 15 to April 11, 2021.

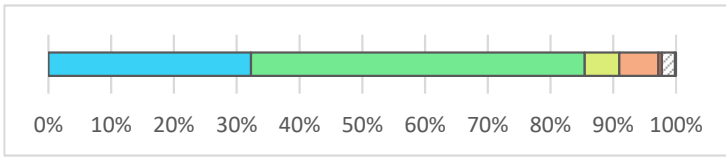
All certificated staff were invited to complete a survey for the primary school where they work.

Of the 1,582 survey invitations sent to certificated staff, 741 surveys were returned. 741/1,582 provides an official response rate of 47%

School	Survey Responses	Surveys Sent	Resp. Rate
Elementary Schools	597	1,304	46%
Middle Schools	206	560	37%
High Schools	241	743	32%
6-12 Magnet Schools	43	94	46%
Alternative Schools	55	119	46%
Total	1,142	2,820	40%

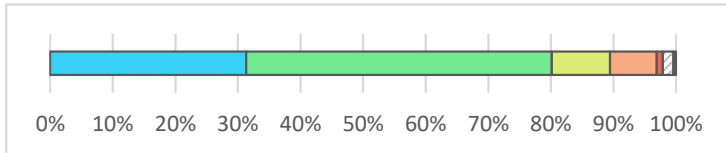
Staff Climate and Culture Survey 2021: District Results

The school staff believes that all students can be successful in school



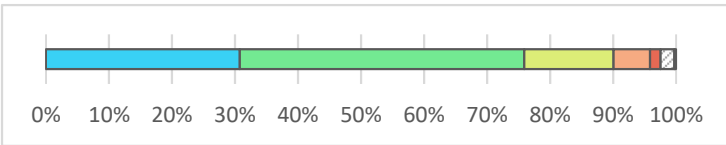
Strongly Agree	32%	368
Agree	53%	607
Neither Agree nor Disagree	6%	63
Disagree	6%	71
Strongly Disagree	1%	6
Dont Know	2%	24
Not Applicable	0%	2
Total		1141

Helping students meet challenging academic goals is a primary focus of this school



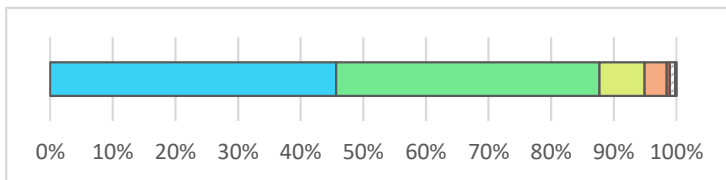
Strongly Agree	31%	356
Agree	49%	555
Neither Agree nor Disagree	9%	106
Disagree	7%	85
Strongly Disagree	1%	11
Dont Know	2%	19
Not Applicable	0%	5
Total		1137

Members of the school community value differences between people and groups



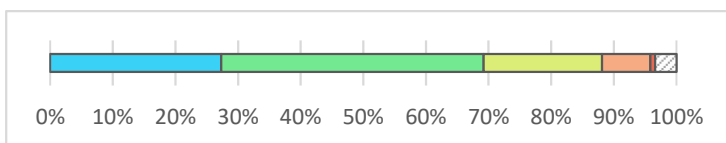
Strongly Agree	31%	351
Agree	45%	515
Neither Agree nor Disagree	14%	162
Disagree	6%	66
Strongly Disagree	2%	19
Dont Know	2%	25
Not Applicable	0%	3
Total		1141

The school staff is welcoming to all students and families



Strongly Agree	46%	521
Agree	42%	480
Neither Agree nor Disagree	7%	82
Disagree	4%	40
Strongly Disagree	1%	6
Dont Know	1%	10
Not Applicable	0%	2
Total		1141

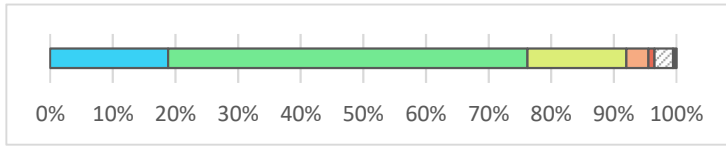
I regularly invite parents to participate or provide input



Strongly Agree	27%	202
Agree	42%	310
Neither Agree nor Disagree	19%	140
Disagree	8%	57
Strongly Disagree	1%	6
Dont Know	3%	25
Not Applicable	0%	25
Total		740

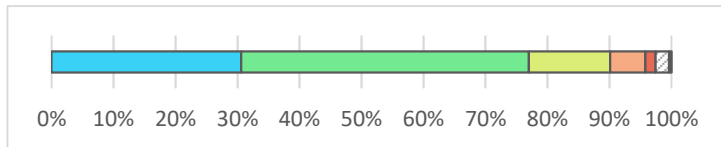
Staff Climate and Culture Survey 2021: District Results

Students are comfortable approaching adults with personal or academic concerns



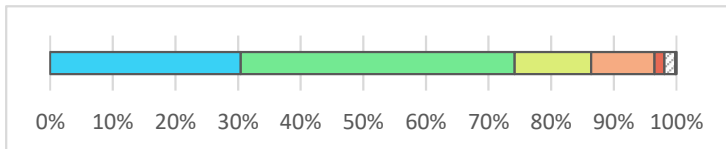
Strongly Agree	19%	139
Agree	57%	424
Neither Agree nor Disagree	16%	117
Disagree	4%	26
Strongly Disagree	1%	7
Dont Know	3%	22
Not Applicable	1%	4
Total		739

The school staff provide ample opportunities for students to get additional help with their schoolwork



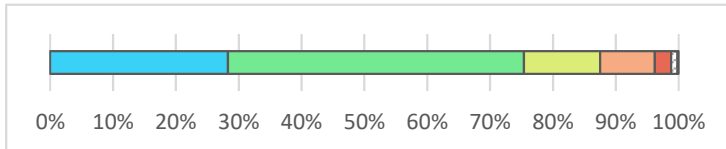
Strongly Agree	31%	226
Agree	46%	343
Neither Agree nor Disagree	13%	97
Disagree	6%	42
Strongly Disagree	2%	12
Dont Know	2%	16
Not Applicable	0%	3
Total		739

My school has a clear definition of respect



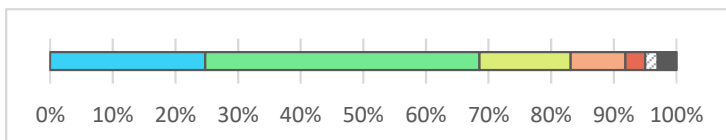
Strongly Agree	30%	337
Agree	44%	485
Neither Agree nor Disagree	12%	135
Disagree	10%	112
Strongly Disagree	2%	18
Dont Know	2%	19
Not Applicable	0%	2
Total		1108

My school communicates practices and updates on a consistent basis



Strongly Agree	28%	313
Agree	47%	521
Neither Agree nor Disagree	12%	134
Disagree	9%	96
Strongly Disagree	3%	29
Dont Know	1%	11
Not Applicable	0%	2
Total		1106

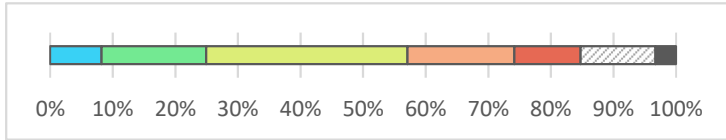
My school provides opportunities for educator input on practices



Strongly Agree	25%	274
Agree	44%	484
Neither Agree nor Disagree	15%	161
Disagree	9%	97
Strongly Disagree	3%	35
Dont Know	2%	22
Not Applicable	3%	33
Total		1106

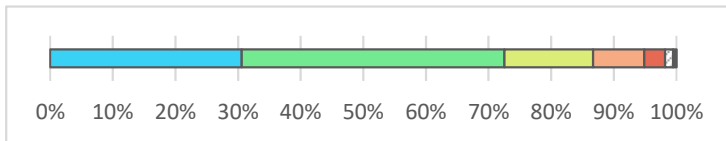
Staff Climate and Culture Survey 2021: District Results

People have an advantage at VPS due to the color of their skin



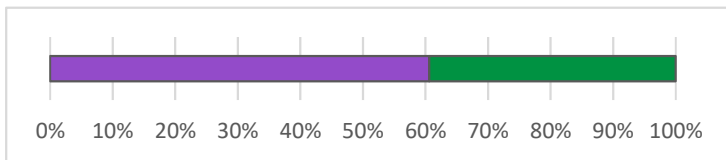
Strongly Agree	8%	90
Agree	17%	184
Neither Agree nor Disagree	32%	354
Disagree	17%	188
Strongly Disagree	11%	116
Dont Know	12%	132
Not Applicable	3%	36
Total		1100

The administrative team communicates a vision for the school



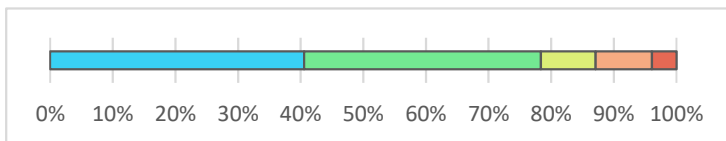
Strongly Agree	31%	338
Agree	42%	464
Neither Agree nor Disagree	14%	157
Disagree	8%	90
Strongly Disagree	3%	37
Dont Know	1%	14
Not Applicable	1%	6
Total		1106

Have you had an issue or concern to discuss with an administrator this year?



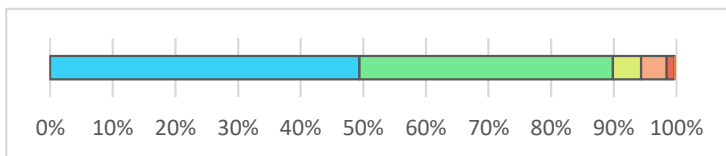
No	61%	669
Yes	39%	435
Total		1104

The administrator responded to my concerns



Strongly Agree	41%	176
Agree	38%	164
Neither Agree nor Disagree	9%	38
Disagree	9%	39
Strongly Disagree	4%	17
Total		434

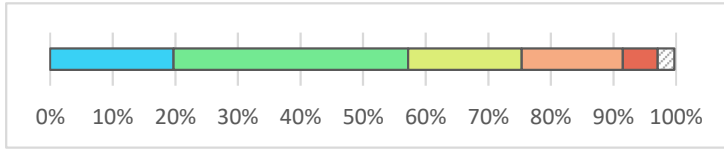
I am able to talk with a member of the administrative team when I need to



Strongly Agree	49%	541
Agree	40%	443
Neither Agree nor Disagree	4%	49
Disagree	4%	45
Strongly Disagree	1%	14
Dont Know	0%	3
Total		1095

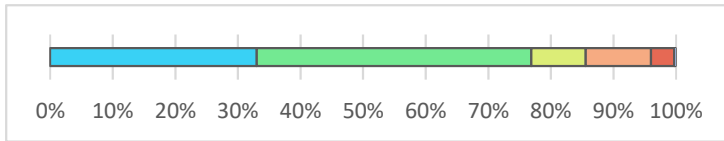
Staff Climate and Culture Survey 2021: District Results

The school staff are included in important decisions at this school



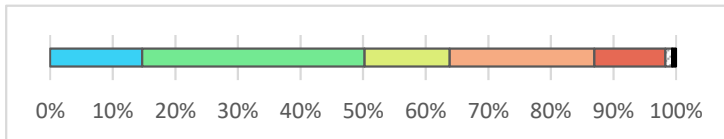
Strongly Agree	20%	216
Agree	37%	410
Neither Agree nor Disagree	18%	199
Disagree	16%	177
Strongly Disagree	6%	61
Dont Know	3%	29
Not Applicable	0%	3
Total		1095

The school is clean and well-maintained



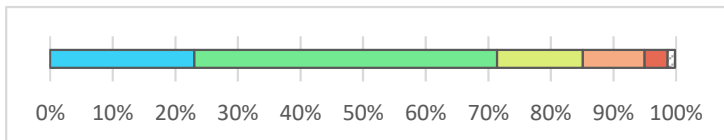
Strongly Agree	33%	361
Agree	44%	480
Neither Agree nor Disagree	9%	95
Disagree	10%	114
Strongly Disagree	4%	41
Dont Know	0%	2
Not Applicable	0%	1
Total		1094

Comfortable temperatures are maintained in the classrooms



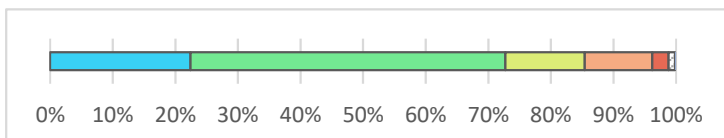
Strongly Agree	15%	161
Agree	36%	390
Neither Agree nor Disagree	14%	149
Disagree	23%	254
Strongly Disagree	11%	124
Dont Know	1%	12
Not Applicable	1%	7
Total		1097

The district does its best to keep the school safe



Strongly Agree	23%	252
Agree	48%	530
Neither Agree nor Disagree	14%	150
Disagree	10%	108
Strongly Disagree	4%	40
Dont Know	1%	13
Not Applicable	0%	2
Total		1095

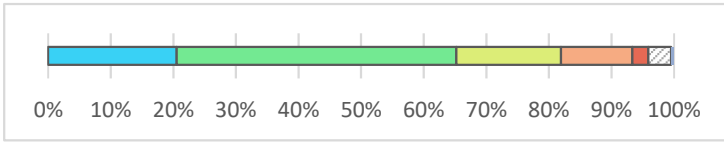
There is adequate training in emergency procedures



Strongly Agree	22%	246
Agree	50%	552
Neither Agree nor Disagree	13%	139
Disagree	11%	118
Strongly Disagree	3%	29
Dont Know	1%	11
Not Applicable	0%	2

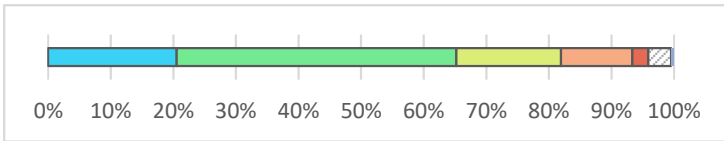
Staff Climate and Culture Survey 2021: District Results

I am satisfied with the efforts the school makes to prevent bullying and harassment



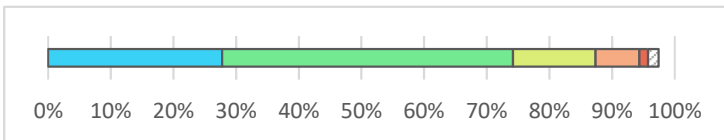
Total		1097
Strongly Agree	21%	225
Agree	45%	489
Neither Agree nor Disagree	17%	183
Disagree	11%	125
Strongly Disagree	3%	28
Dont Know	4%	40
Not Applicable	0%	5
Total		1095

My school respects different aspects of my identity



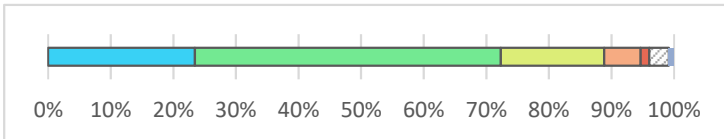
Total		1085
Strongly Agree	24%	256
Agree	45%	490
Neither Agree nor Disagree	19%	203
Disagree	4%	39
Strongly Disagree	1%	13
Dont Know	4%	45
Not Applicable	4%	39
Total		1085

My school provides professional learning opportunities and encourages us to reflect the different cultures identities and experiences in the classroom



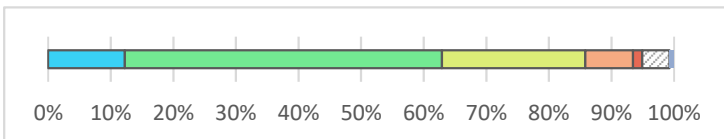
Total		1084
Strongly Agree	28%	301
Agree	46%	503
Neither Agree nor Disagree	13%	143
Disagree	7%	76
Strongly Disagree	1%	15
Dont Know	2%	18
Not Applicable	3%	28
Total		1084

Members of the school community value differences between people and groups



Total		1083
Strongly Agree	23%	254
Agree	49%	529
Neither Agree nor Disagree	17%	179
Disagree	6%	63
Strongly Disagree	1%	15
Dont Know	3%	34
Not Applicable	1%	9
Total		1083

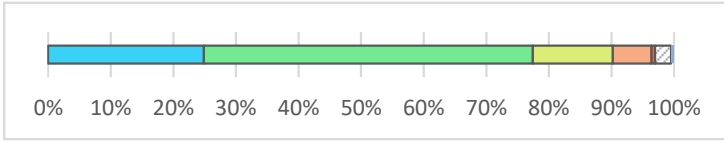
Students treat each other fairly



Total		6
Strongly Agree	12%	133
Agree	51%	549
Neither Agree nor Disagree	23%	248
Disagree	8%	83
Strongly Disagree	1%	16
Dont Know	4%	47

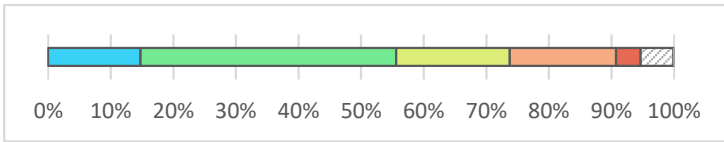
Staff Climate and Culture Survey 2021: District Results

School staff members treat students fairly



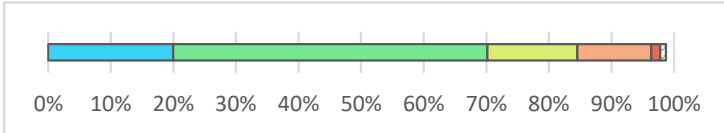
Not Applicable	1%	8
Total		1084
Strongly Agree	25%	269
Agree	53%	569
Neither Agree nor Disagree	13%	138
Disagree	6%	67
Strongly Disagree	1%	6
Dont Know	3%	28
Not Applicable	0%	5
Total		1082

School staff response is fair and consistent when rules are broken or behavior expectations are not met



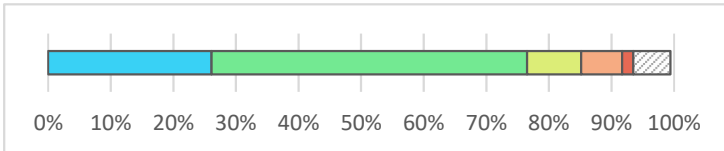
Strongly Agree	15%	105
Agree	41%	291
Neither Agree nor Disagree	18%	129
Disagree	17%	121
Strongly Disagree	4%	28
Dont Know	5%	37
Not Applicable	0%	1
Total		712

I feel equipped to recognize signs of trauma and mental illness



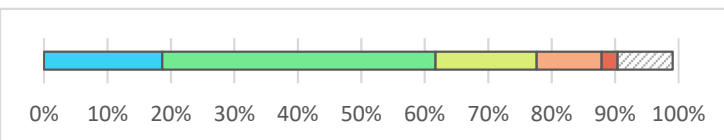
Strongly Agree	20%	214
Agree	50%	539
Neither Agree nor Disagree	14%	154
Disagree	12%	127
Strongly Disagree	1%	15
Dont Know	1%	10
Not Applicable	0%	14
Total		1073

My school has the resources to connect students and families to the appropriate services they need for mental health



Strongly Agree	26%	280
Agree	50%	540
Neither Agree nor Disagree	9%	93
Disagree	7%	70
Strongly Disagree	2%	19
Dont Know	6%	64
Not Applicable	0%	6
Total		1072

When students misbehave there are opportunities for them to repair the harm they may have caused the school community



Strongly Agree	19%	200
Agree	43%	462
Neither Agree nor Disagree	16%	171
Disagree	10%	110
Strongly Disagree	3%	27
Dont Know	0%	0
Not Applicable	0%	0
Total		870

Staff Climate and Culture Survey 2021: District Results

<input checked="" type="checkbox"/> Dont Know	9%	93
<input checked="" type="checkbox"/> Not Applicable	0%	10
Total		1073

Appendix A: Response Rates by School Building

School	Survey Responses	Surveys Sent	Resp. Rate
Anderson	35	74	47%
Chinook	40	70	57%
Eisenhower	24	54	44%
Felida	33	70	47%
Franklin	16	38	42%
Fruit Valley	17	37	46%
Harney	33	70	47%
Hazel Dell	28	44	64%
Hough	30	57	53%
King	32	60	53%
Lake Shore	28	77	36%
Lincoln	17	60	28%
Marshall	29	74	39%
Minnehaha	25	54	46%
Ogden	45	88	51%
Roosevelt	37	76	49%
Sacajawea	32	63	51%
Salmon Creek	21	54	39%
Truman	25	68	37%
Walnut Grove	31	77	40%
Washington	19	39	49%
Alki	38	82	46%
Discovery	41	95	43%
Gaiser	33	96	34%
Jason Lee	33	83	40%
McLoughlin	36	112	32%
Jefferson	25	92	27%
Columbia River	52	151	34%
Fort Vancouver	63	200	32%
Hudson's Bay	57	182	31%
Skyview	59	188	31%
LCHS/Flex Acad	10	22	45%
iTech	23	40	58%
VSAA	20	54	37%
Fir Grove/Gate	21	44	48%
Lieser	5	8	63%
Other	29	67	43%

Staff Climate and Culture Survey 2021: District Results

Total	1,142	2,820	40%
-------	-------	-------	-----